

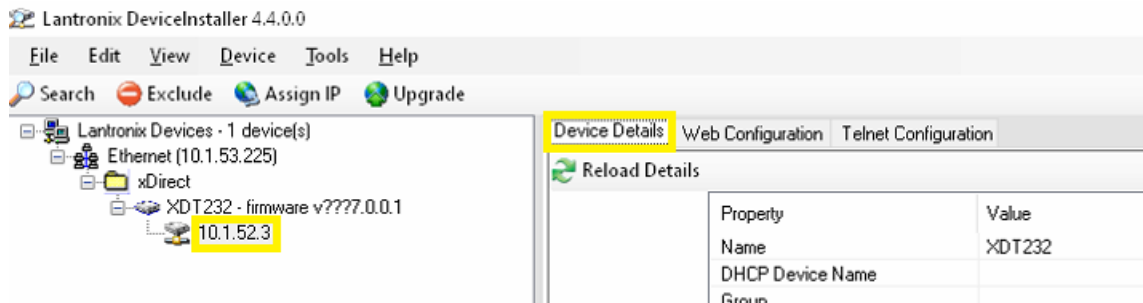
Ръководство за промяна на паролата за вход в RSIP.

Необходими неща:

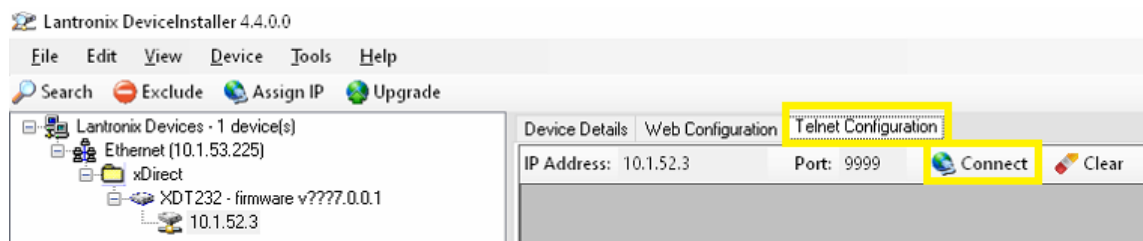
- Мрежова връзка с RSIP модула.
- LANTRONIX DEVICE INSTALLER софтуер. Може да се свали от следния линк:
<https://www.lantronix.com/products/deviceinstaller/>

1- Стартираме Lantronix Device Installer Софтуер

2- Намираме RSIP Модула и го маркираме.



3- Избираме Telnet Configuration и натискаме Connect.



4- Изверете опция 6 и натиснете **Enter** от сления прозорец:

```
*** basic parameters
Hardware: Ethernet TPI
IP addr - 0.0.0.0/DHCP/BOOTP/AutoIP, no gateway set
DNS Server not set
Telnet config password set
DHCP device name : not set
DHCP FQDN option: Disabled

*** Security
SNMP is                enabled
SNMP Community Name:   public
Telnet Setup is        enabled
TFTP Download is       enabled
Port 77FEh is          enabled
77FEh Access Mode is   Read & Write
Web Server is          enabled
Web Setup is           enabled
ECHO is                disabled
Encryption is          disabled
Enhanced Password is   enabled
Telnet Authentication is disabled

*** Channel 1
Baudrate 9600, I/F Mode 4C, Flow 00
Port 10001
Connect Mode : CO
Send '+++ ' in Modem Mode enabled
Show IP addr after 'RING' enabled
Auto increment source port disabled
Remote IP Adr: --- none ---, Port 00000
Disconn Mode : 00
Flush  Mode : 00

*** Expert
TCP Keepalive      : 45s
ARP cache timeout: 600s
CPU performance: Regular
Monitor Mode @ bootup : enabled
HTTP Port Number : 80
MTU Size: 1400
TCP Re-transmission timeout: 500 ms
Alternate MAC: disabled
Ethernet connection type: auto-negotiate

Change Setup:
 0 Server
 1 Channel 1
 5 Expert
 6 Security
 7 Defaults
 8 Exit without save
 9 Save and exit          Your choice ? |
```

5- Натискайте **Enter** докато не стигнете до опция "Change the Password".
Въведете **Y** и нова парола. Натиснете **Enter**.

```
 9 Save and exit                Your choice ? 6
Disable SNMP (N) ?
SNMP Community Name (public):
Disable Telnet Setup (N) ?
Disable TFTP Firmware Update (N) ?
Disable Port 77FEh (N) ?
77FEh Access Mode (0=Read & Write, 1=Read Only): (0) ?
Disable Web Server (N) ?
Disable Web Setup (N) ?
Disable ECHO ports (Y) ?
Enable Encryption (N) ?
Enable Enhanced Password (Y) ?
Change the Password (N) ? Y
Enter Password : |
```

6- Натискайте **Enter** докато стигнете до края.
Въведете **9** и изчакайте модула да се рестартира.